

SoCal Gas Company San Dimas Base Water-Wise Plant Palette

Trees - New



Cercis canadensis / Eastern Redbud
Deciduous
Size: 20' High, 20' Wide
Small Tree
Flowers: Pink in spring
Water: Low
Uses: Patio Tree, Spring Flowers, Fall Leaf Color



Cercis occidentalis 'Forest Pansy' / Forest Pansy Redbud
Deciduous
Size: 20' High, 20' Wide
Small Tree
Flowers: Pink in spring
Water: Low
Uses: Patio Tree, Spring Flowers, Fall Leaf Color



Platanus acerfolius 'Bloodgood' / Bloodgood London Plane Tree
Deciduous
Size: 60' High, 30'-40' Wide
Large Tree
Flowers: None
Water: Low
Uses: Shade tree, year round interest with trunk color, Fall Leaf Color



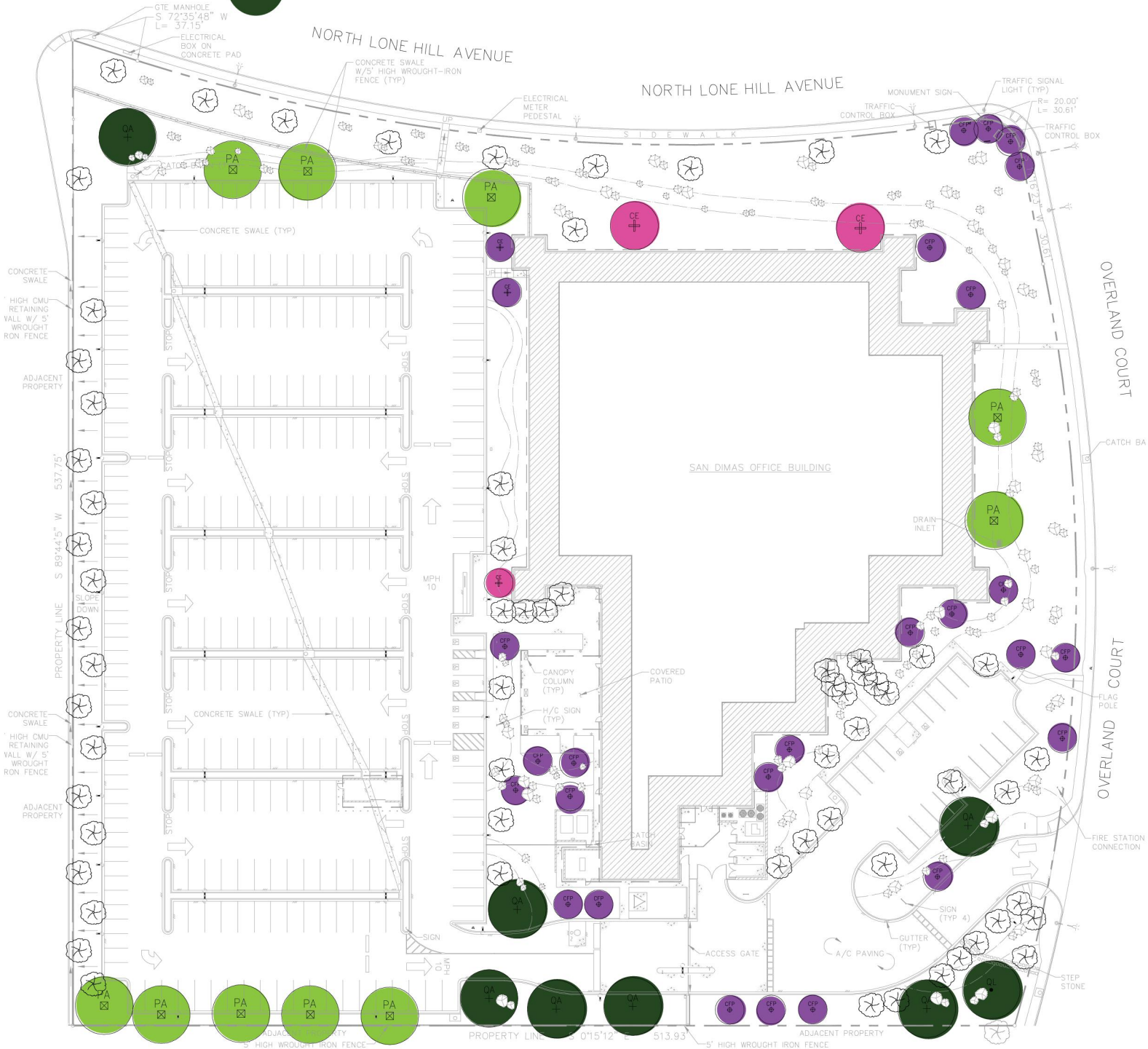
Quercus agrifolia / Coast Live Oak
Evergreen
Size: 50' High, 70' Wide
Large Tree
Flowers: None
Water: Low
Uses: Shade tree, Native gardens

SoCal Gas Company San Dimas Base Water-Wise Plant Palette

New Tree Locations

Legend

-  *Cercis canadensis* / Eastern Redbud
-  *Cercis occidentalis* 'Forest Pansy' / Forest Pansy Redbud
-  *Platanus acerfolius* 'Bloodgood' / Bloodgood London Plane Tree
-  *Quercus agrifolia* / Coast Live Oak



Shrubs - Accent Plants



Agave attenuata 'Ray of Light' / Ray of Light Foxtail Agave
 Size: 5' High, 6' Wide
 Flowers: None
 Water Use: Low
 Exposure: Sun or Shade
 Uses: Accent plant, interesting variegated leaves, needs some protection from frost. No thorns. Good back ground plant.



Agave desmettiana 'Variegata' / Variegated Smooth Agave
 Size: 3' High, 4' Wide
 Flowers: End of life cycle after 8 years it flowers, then dies. Repopulates via pups.
 Water Use: Low
 Exposure: Full Sun
 Uses: Accent plant, interesting variegated leaves. Good mid ground plant.



Aloe striata / Coral Aloe
 Size: 3' High, 2' Wide
 Flowers: Red in Spring and Winter
 Water Use: Low
 Exposure: Full Sun to Part Shade
 Uses: Accent plant, attracts hummingbirds, fragile leaves can be damaged and looks unsightly, good foreground plant.



Anigozanthos 'Big Red' / Big Red Kangaroo Paw
 Size: 4'-6' High, 2'-3' Wide
 Flowers: Large Red Flower stocks, Spring and Fall
 Water Use: Low
 Exposure: Full Sun
 Uses: Accent plant, attracts hummingbirds, amazing when planted in large masses, good mid ground plant.

SoCal Gas Company San Dimas Base Water-Wise Plant Palette

Shrub - Locations

Legend

- Agave attenuata 'Ray of Light' / Ray of Light Foxtail Agave
- Agave desmettiana 'Variegata' / Variegated Smooth Agave
- Aloe striata / Coral Aloe
- Anigozanthos 'Big Red' / Big Red Kangaroo Paw



Shrubs - Accent Plants



Anigozanthos 'Harmony Yellow' / Harmony Yellow Kangaroo Paw
Size: 2'-3' High, 1'-2' Wide
Flowers: Large Yellow Flower stocks, Spring and Fall
Water Use: Low
Exposure: Full Sun
Uses: Accent plant, attracts hummingbirds, amazing when planted in large masses, good mid ground plant or between mid and foreground.

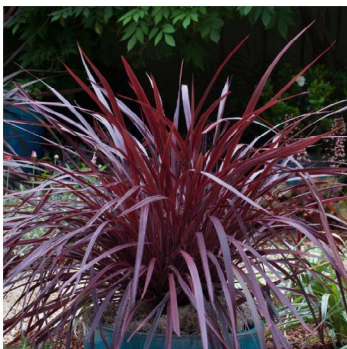
Shrubs - Grasses and Grass Like Plants



Carex oshimensis 'Evergold' / Variegated Japanese Sedge
Size: 1'-2' High, 2'-3' Wide
Flowers: Insignificant brown small brown flowers
Water Use: Moderate
Exposure: Light Shade/ Part Sun
Uses: Adds color to shady areas, good in foreground mass plantings. Good in rock gardens or along pathways.



Carex praegracilis / Clustered Field Sedge
Size: 8" High and Spreading
Flowers: Insignificant brown small brown flowers
Water Use: Moderate
Exposure: Sun or Shade
Uses: Short spreading grass for foregrounds, spreads by rhizomes. Good for natural gardens or along streams or drystreams.



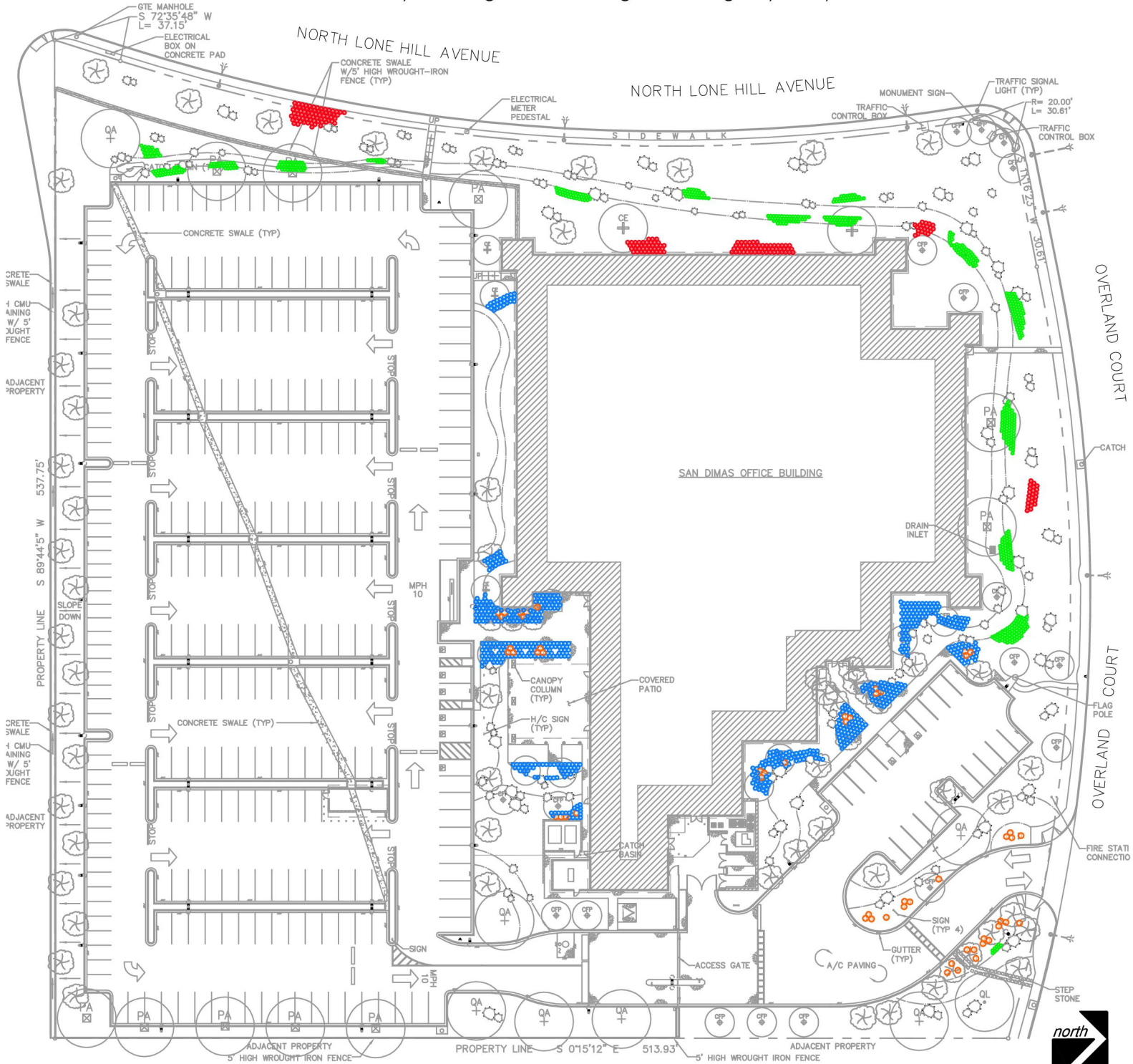
Cordyline 'Design-a-Line' / Design-a-line Burgundy Cordyline
Size: 2'-3' High, 2'-3' Wide
Flowers: Light Lavender (Infrequent/seldom flowers)
Water Use: Moderate
Exposure: Sun or Shade
Uses: Accent plant, good mid ground plant, interesting dark purple leaves year round, good in containers, interesting when planted with bright green plants for contrast.

SoCal Gas Company San Dimas Base Water-Wise Plant Palette

Shrub - Locations

Legend

- Anigozanthos 'Harmony Yellow' / Harmony Yellow Kangaroo Paw
- Carex oshimensis 'Evergold' / Variegated Japanese Sedge
- Carex praegracilis / Clustered Field Sedge
- Cordyline 'Design-a-Line' / Design-a-line Burgundy Cordyline



SoCal Gas Company San Dimas Base Water-Wise Plant Palette

Shrubs - Grasses and Grass Like Plants



Dianella 'Cassa Blue' / Cassa Blue Flax Lily
 Size: 1'-2' High, Spreading
 Flowers: Light blue on 1 High flower foot stock, Spring and Summer
 Water Use : Low
 Exposure: Sun or Shade
 Uses: Accent plant, looks great when planted in masses, interesting blue foliage, upright form, slow growing strap-leaf plant.



Hesperaloe parviflora / Red Yucca
 Size: 3'-4' High, 4-5' Wide
 Flowers: Rose on 5' high flower stock
 Water Use: Low
 Exposure: Full Sun or light Shade
 Uses: Accent plant, attracts hummingbirds, very hardy plant, does best in hot areas of the garden, good in containers and planted in masses. Plant in mid ground of garden.



Juncus patens 'Elk Blue' / California Gray Rush
 Size: 1'-2' High, 1'-2' Wide
 Flowers: Brown in Spring and Fall
 Water Use: Low
 Exposure: Sun or Shade
 Uses: Good grass like plant to simulate water in dry stream, can live in drought conditions and in standing water,



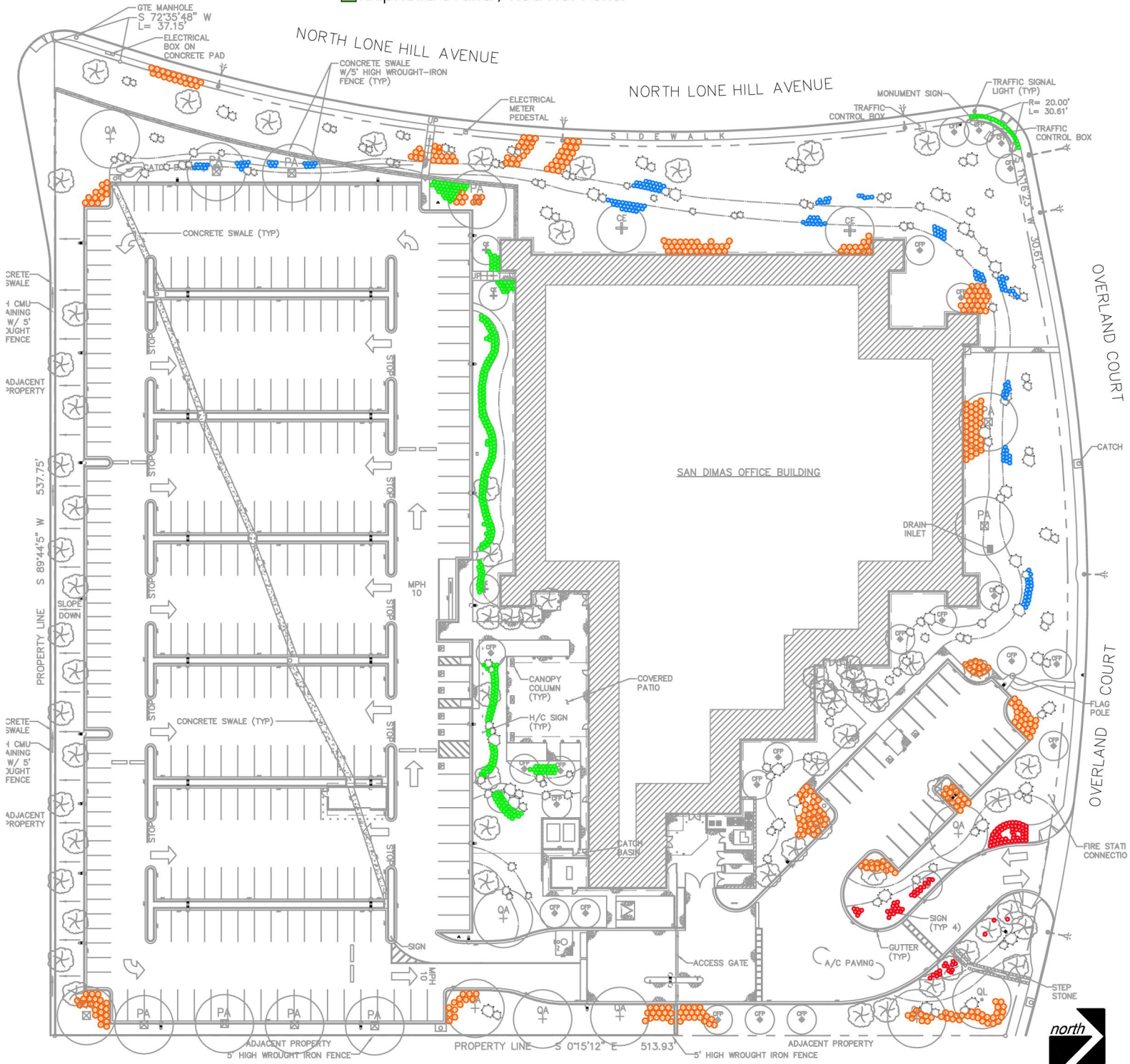
Kniphofia uvaria / Red Hot Poker
 Size: 2'-3' High, 3'-4' Wide
 Flowers: Red-Orange Flowers on tubular spikes, Spring and Summer
 Water Use: Low
 Exposure: Full Sun
 Uses: Attracts hummingbirds, amazing when planted in large masses, good mid ground plant, good in containers.

SoCal Gas Company San Dimas Base Water-Wise Plant Palette

Shrub - Locations

Legend

- Dianella 'Cassa Blue' / Cassa Blue Flax Lily
- Hesperaloe parviflora / Red Yucca
- Juncus patens 'Elk Blue' / California Gray Rush
- Kniphofia uvaria / Red Hot Poker



SoCal Gas Company San Dimas Base Water-Wise Plant Palette

Shrubs - Grasses and Grass Like Plants



Leymus condensatus 'Canyon Prince' / Canyon Prince Wild Rye
Size: 2'-3' High, Spreading/Running
Flowers: Wheat color flowers, Summer
Water Use: Low
Exposure: Full Sun
Uses: Interesting when planted in large masses, good background plant, interesting blue foliage, good in containers.



Melinis nerviglumis 'Pink Crystals' / Ruby Grass
Size: 1' High, 1' Wide
Flowers: Pink flowers, Spring and Summer
Water Use: Moderate
Exposure: Full Sun
Use: Good foreground mass plantings. Good in rock gardens. Nice small grass.



Muhlenbergia capillaris / Pink Muhly
Size: 2'-3' High, 2'-3' Wide
Flowers: Pink airy flowers in Fall
Water Use: Low
Exposure: Full Sun
Uses: Beautiful airy grass, looks amazing in morning sun, good in mass plantings, good around dry stream beds, mid ground or background in landscape.



Muhlenbergia rigens / Deer Grass
Size: 4'-5' High, 4'-5' Wide
Flowers: Silver arching flowers, Summer
Water Use: Low
Exposure: Sun or Shade
Uses: Very tough large grass, good in mass plantings, good when going for natural landscape look, habitat for bird and butterflies,

SoCal Gas Company San Dimas Base Water-Wise Plant Palette

Shrub - Locations

Legend

- *Leymus condensatus* 'Canyon Prince' / Canyon Prince Wild Rye
- *Melinis nerviglumis* 'Pink Crystals' / Ruby Grass
- *Muhlenbergia capillaris* / Pink Muhly
- *Muhlenbergia rigens* / Deer Grass



SoCal Gas Company San Dimas Base Water-Wise Plant Palette

Shrubs - Grasses and Grass Like Plants



Pennisetum mesasiaticum 'Red Bunny Tails' / Red Bunny Tails Grass

Size: 1'-2' High, 1'-2' Wide

Flowers: Red flowers in Spring and Summer (flowers look like Bunny Tails)

Water Use : Low

Exposure: Sun or Shade

Uses: Attractive small fountain grass, great in mass plantings, great for foreground plantings.

Shrubs - Typical Shrub Shaped Plants



Callistemon 'Little John' / Dwarf Callistemon

Size: 3'-5' High, 4'-6' Wide

Flowers: Red flowers, Year Round

Water Use: Low

Exposure: Full Sun

Uses: Very hardy plant, good in parking lots, can be pruned to keep small, good in mass planting or foundation plantings, can be used as low hedge, attracts bees and hummingbirds.



Callistemon viminalis 'Slim' / Slim Callistemon

Size: 8'-10' High, 3'-4' Wide

Flowers: Red flowers, Year Round

Water Use: Low

Exposure: Full Sun

Uses: Excellent narrow shrub for screening views, can be pruned to smaller sizes, keep all Bottle Brushes away from pools, year round color, attracts bees and hummingbirds, background plant.



Callistemon citrinus 'Jeffersii' / Pink Bottlebrush

Size: 6' High, 4' Wide

Flowers: Bright Pink flowers, Year Round

Water Use: Low

Exposure: Full Sun

Uses: Great background shrub, very tough plant like all Bottle Brushes, attracts bees and hummingbirds, interesting flower color.

SoCal Gas Company San Dimas Base Water-Wise Plant Palette

Shrub - Locations

Legend

- Pennisetum messiacum 'Red Bunny Tails' / Red Bunny Tails Grass
- Callistemon 'Little John' / Dwarf Callistemon
- Callistemon viminalis 'Slim' / Slim Callistemon
- Callistemon citrinus 'Jeffersii' / Pink Bottlebrush



Shrubs - Typical Shrub Shaped Plants



Echium candicans / Pride of Madeira
 Size: 4'-6' High, 4'-6' Wide
 Flowers: Blue-Violet Flowers on 20" flower stocks, Spring and Summer
 Water Use: Low
 Exposure: Full Sun
 Uses: Great on slopes, will die back during winter frosts, good back ground plant, attract bees, great at coast.



Euphorbia tirucalli 'Sticks on Fire' / Red Pencil Tree
 Size: 4'-8' High, 3'-5' Wide
 Flowers: Insignificant
 Water Use: Low
 Exposure: Full Sun
 Use: Great colorful succulent for background succulent plantings, interesting red foliage color during winter frosts, good in containers.



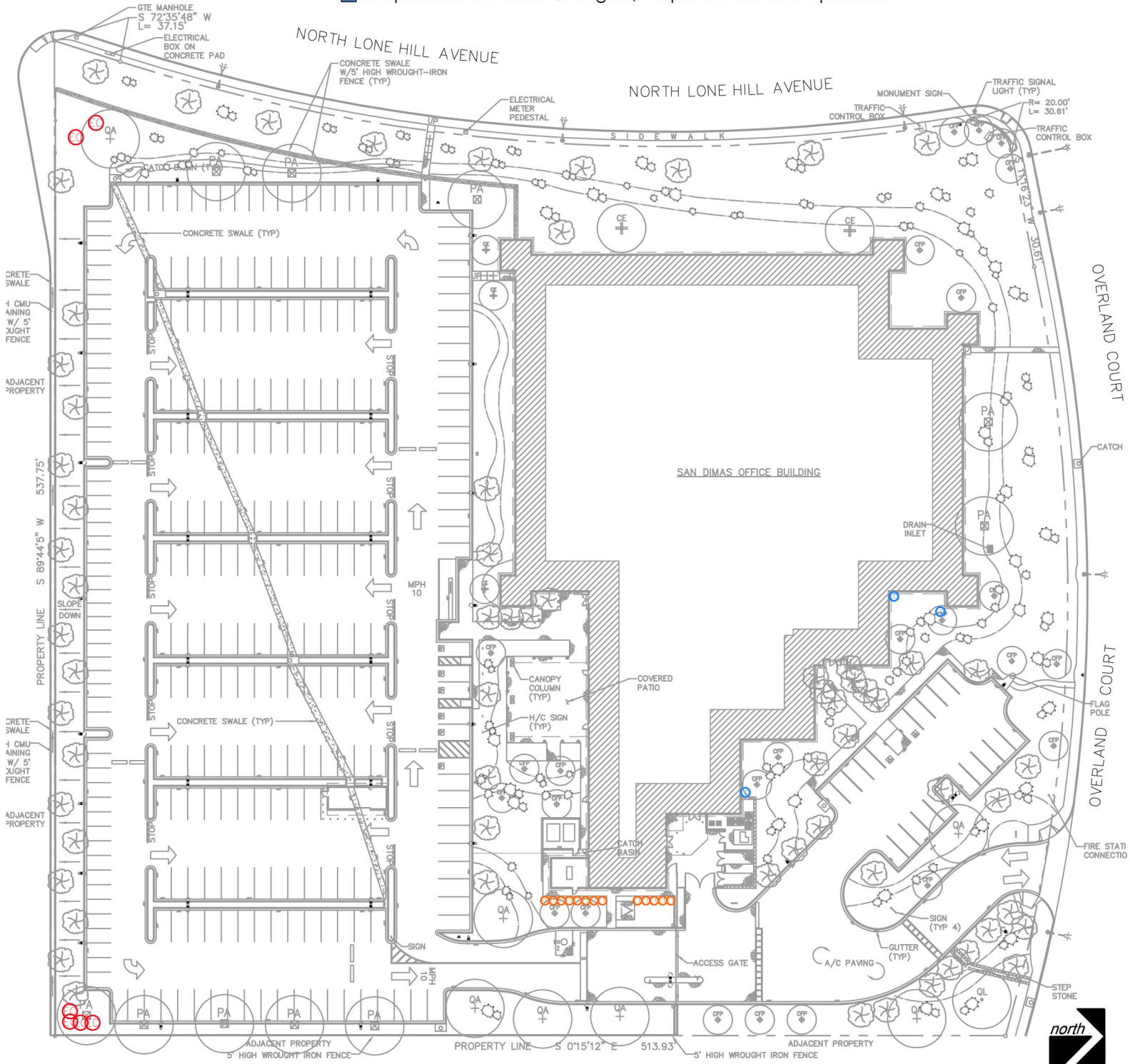
Loropetalum chinense 'Shang-hi' / Purple Diamond Loropetalum
 Size: 3'-4' High, 4' Wide
 Flowers: Neon Pink Flowers Spring and Fall
 Water Use: Moderate
 Exposure: Part Sun to Shade
 Uses: Great foundation plant for northern exposures, interesting dark foliage with contrasting bright pink flowers, background plantings, attracts birds.

SoCal Gas Company San Dimas Base Water-Wise Plant Palette

Shrub - Locations

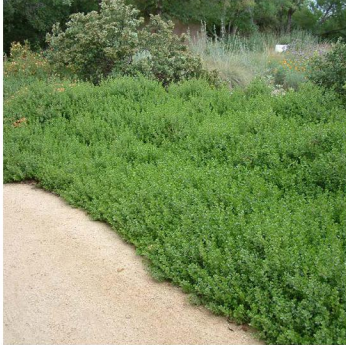
Legend

- Echium candicans / Pride of Madeira
- Euphorbia tirucalli 'Sticks on Fire' / Red Pencil Tree
- Loropetalum chinense 'Shang-hi' / Purple Diamond Loropetalum



SoCal Gas Company San Dimas Base Water-Wise Plant Palette

Ground covers



Baccharis pilularis 'Pigeon Point' / Dwarf Coyote Brush
Size: 1'-2' High, 8'-10' Wide
Flowers: None
Water Use: Low
Exposure: Full Sun
Uses: Great on slopes, very tough/ life span of about 10 years, good under large trees including oaks.



Bougainvillea 'Raspberry Ice' / Raspberry Ice Bougainvillea
Size: 2'-3' High, 5'-6' Wide
Flowers: Bright magenta Flowers, Summer
Water Use: Low
Exposure: Full Sun
Use: Amazing magenta flowers on a variegated plant, great in containers, will die back in heavy frost but will come back in spring, great color accent to any garden.



Juniperus horizontalis 'Monber' / Ice Blue Juniper
Size: 4" High, 8' Wide
Flowers: None
Water Use: Moderate
Exposure: Full Sun
Uses: Amazing blue color ground cover, easy care once established, good in rock gardens.



Lantana montevidensis - Purple Trailing Lantana
Size: 1'-2' High, 8'-10' Wide
Flowers: Small Purple Flowers, Year Round
Water Use: Low
Exposure: Full Sun
Uses: Tough colorful groundcover, will die back in frost but will regrow in spring, foliage is strongly scented, attracts bees and butterflies.

SoCal Gas Company San Dimas Base Water-Wise Plant Palette

Shrub - Locations

Legend

- Baccharis pilularis 'Pigeon Point' / Dwarf Coyote Brush
- Bougainvillea 'Raspberry Ice' / Raspberry Ice Bougainvillea
- Juniperus horizontalis 'Monber' / Icee Blue Juniper
- Lantana montevidensis - Purple Trailing Lantana



SoCal Gas Company San Dimas Base Water-Wise Plant Palette

Ground covers



Lantana 'Gold Mound' / Gold Mound Lantana

Size: 2'-3' High, 3'-4' Wide

Flowers: Golden Yellow Flowers, Summer

Water Use: Low

Exposure: Full Sun

Uses: This lantana loves the heat, great in mass plantings, attracts butterflies. Will die back in frost but will re grow in spring.



Lantana 'Pink Caprice' / Pink Caprice Lantana

Size: 1'-3' High, 1'-3' Wide

Flowers: Pink and Yellow Flowers, Spring through Fall

Water Use: Low

Exposure: Full Sun

Use: Good lantana for adding additional color to planters, great in mass plantings, attracts butterflies. Will die back in frost but will re grow in spring.



Rosa Ground Cover Rose (Scarlet)/ Flower Carpet Scarlet

Size: 2'-2.5' High, 4' Wide

Flowers: Red Flowers, Year Round

Water Use: Moderate

Exposure: Full Sun

Uses: Tough groundcover rose for Inland areas, can be grown in partial shade but will have less flowers, great in mass plantings.



Senecio mandraliscae / Blue Chalk Sticks

Size: 1'-3' High, 2'-3' Wide

Flowers: White, Summer

Water Use: Low

Exposure: Full Sun

Uses: Spreading succulent, great in succulent gardens, foreground planting, interesting blue color, forms very dense groundcover,

SoCal Gas Company San Dimas Base Water-Wise Plant Palette

Shrub - Locations Legend

- Lantana 'Gold Mound' / Gold Mound Lantana
- Lantana 'Pink Caprice' / Pink Caprice Lantana
- Rosa Ground cover Rose (Scarlet) / Flower Carpet Scarlet
- Senecio mandraliscae / Blue Chalk Sticks

